



Westland Horticulture Limited,
14 Granville Industrial Estate,
Granville Road, Dungannon, Co Tyrone, BT70 1NJ
Tel: +44 (0) 1480 443789
www.gardenhealth.com

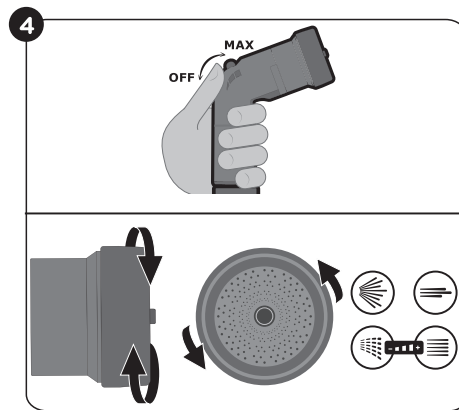
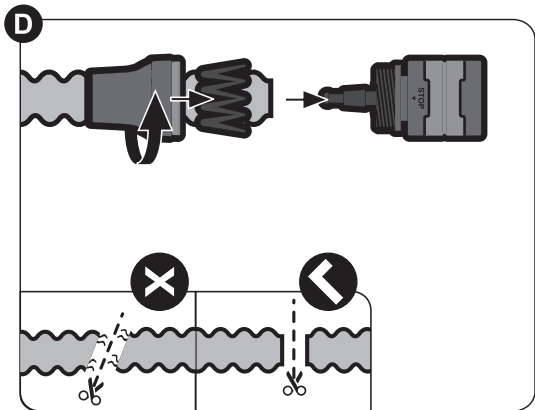
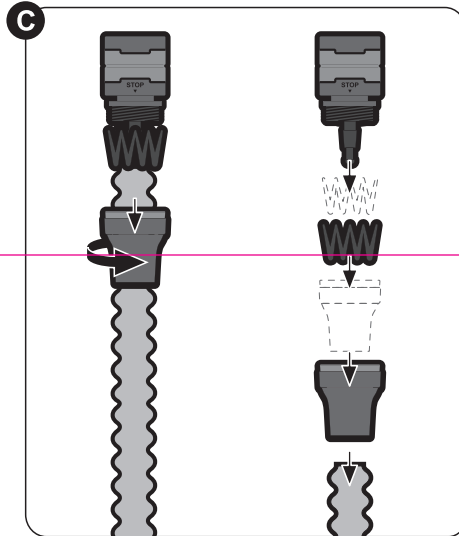
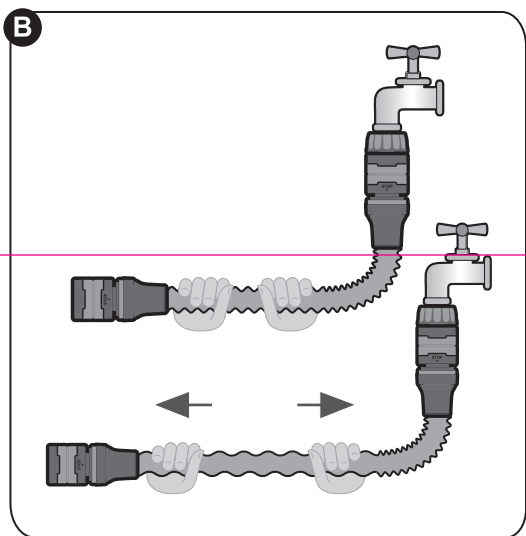
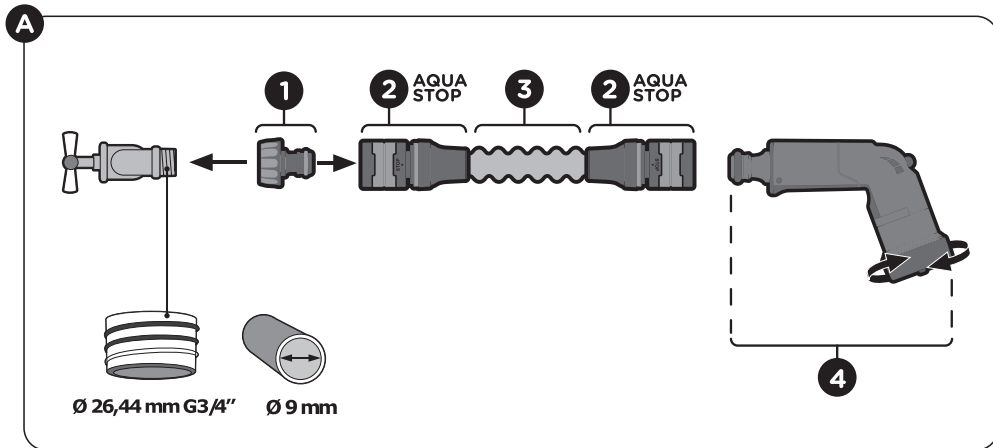
customerservice@westland.com

91xxxxx

105 mm

148,5 mm

EN - GUARANTEE / The full product comes with a 5-year warranty. Terms and conditions: • The warranty starts from the purchase date and covers material or manufacturing defects; • Keep your proof of purchase (in a legible condition) together with the faulty product, as they are necessary to exercise the warranty; • If any material and manufacturing defects are discovered during the warranty period, the product will be replaced or repaired; • Report any damages within 10 days from detecting them to the dealer from which the product was purchased. Should you fail to receive adequate feedback, you can contact us directly at customerservice@westland.com; • The replacement or repair of defective products does not give rise to a new warranty period.



USE AND MAINTENANCE MANUAL

Congratulations on your purchase of Compactflo, a revolutionary product designed to change your lifestyle!
For further information, visit the website: www.gardenhealth.com

Contents of the package (Picture A)

- 1 tap connector Ø 26.5 mm (G 3/4") (1)
- 2 Compactflo snap-fit fittings with Aquastop device (2) to protect against accidental spraying
- 1 Compactflo extendable hose that stretches to roughly twice its original length as water flows through it at a pressure of 3 bar (3)
- 1 multi-purpose spray gun (4)

Technical data

- The product is suitable for coming into contact with food, in conformity to Regulation (EU) no. 10/2011, Simulant A REACH (Regulation no. 1907/2006) and RoHS (Directive 2011/65/EC).
- Internal Ø roughly 9 mm;
- Operating pressure: min 1 bar – max 4 bar;
- Burst pressure (at 20°C): 18 bar;
- Operating temperature: -10°C to +50°C;
- Resistant to UV rays.

Warnings

- Compactflo stretches to approximately twice its original size after a few uses, as water from the domestic water supply (3 bar) flows through it; If your domestic water supply system does not reach this pressure, Compactflo will probably not stretch to its expected length;
- In this case, you can help to stretch Compactflo by gripping the hose along its entire length, with water inside it, as shown (Picture B);
- Compactflo is made of flexible material, therefore its dimensions when stretched or shrunk may vary after a few uses, depending on the water pressure, temperature and frequency of use;
- For optimal performance, the hose should be kept pressurised for a few minutes before using it the first time;
- Avoid dragging Compactflo against particularly sharp surfaces, such as thorn bushes, rose bushes, and metal or glass parts;
- If not used for extended periods, Compactflo should be fully emptied by closing the tap and letting the water inside it flow through the spray gun;
- Not suitable for use with sprinklers and hose reels;
- Do not allow children to play with Compactflo;
- Only use Compactflo fittings when replacing fittings (Pictures C and D).