

TECHNICAL FACT SHEET - LAWNS

V2-20/01/21

AFTERCUT ALL IN ONE

A triple action lawn treatment that greens and feeds your lawn, whilst controlling weeds and moss.


BENEFIT

- Feeds and conditions
- 7 Day rapid greening
- Kills weeds & roots
- Kills moss

KEY POINTS

Grass will rapidly green up following application.
Moss will blacken as it dies and will need to be raked out.
Weeds may vigorously grow initially before twisting and distorting before they die.

APPLICATION RATE

METHOD OF APPLICATION	APPLICATION RATE
 Apply by hand or by spreader	32g sq.m

WHERE TO USE

For use on lawns ONLY



INSTRUCTIONS FOR USE

It is good practice to wear gloves when using the product, although it is not a requirement.



APPLICATION: Mark out the areas to be treated. Apply evenly at 32g/sq.m over the marked area by hand or wheeled spreader.

WHEN USING A WHEELED SPREADER:

Adjust the setting or calibrate to apply 32g/sq.m.

Visit www.gardenhealth.com for spreader setting guidance

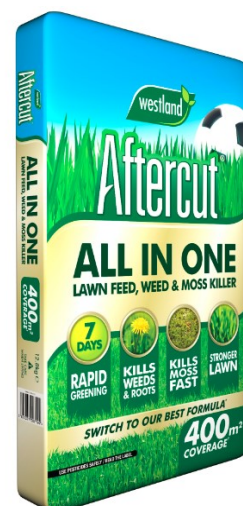
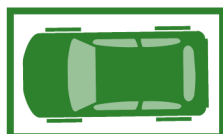
TO FINISH: Brush off granules immediately from hard surfaces, paving, decking, clothing and footwear to avoid staining/discolouration. Do not wash as may cause staining.



Water the lawn within **48 HOURS** if no rain falls.
After **7-14 DAYS** rake out dead moss and weeds
You can mow the lawn **4 DAYS** after treatment.

Handy Tip:

1 parking space =
2x5 metres = 10 sq. m



MAPP 18653

PCS 06246

NPK VALUE: 10-2-2

ACTIVE INGREDIENTS:

Dicamba— 0.057% (Weedkiller)

2,4-D—0.286% w/w (Weedkiller)

Mecoprop-P—0.286% w/w (Weedkiller)

Ferrous sulphate— 21.73% w/w heptahydrate (Mosskiller)

WHEN TO USE

JAN	FEB	MAR	APR	MAY	JUN	JUL	AUG	SEP	OCT	NOV	DEC
				✓	✓	✓	✓				

For use on established lawns (6+ months old) when grass, moss and weeds are actively growing (May-Aug). Wait at least 6 weeks for a second application. Apply weeds to grow 3 days before treatment to enable weedkiller absorption.

BEST CONDITIONS:

Apply when soil is moist and grass is dry. Do not use during drought, freezing, windy conditions or before heavy rain.

EXPECTED RESULTS

After **7 DAYS** the grass will become greener.

Moss: Will turn black as it dies. Any discolouration of the lawn is temporary. Re-treatment may be necessary for heavy infestation, or if moss returns.

Weeds: At first they may grow vigorously and become distorted or twisted as they die. Re-treat large or persistent weeds once they regrow.

AFTERCUT ALL IN ONE LAWN FEED, WEED AND MOSS KILLER

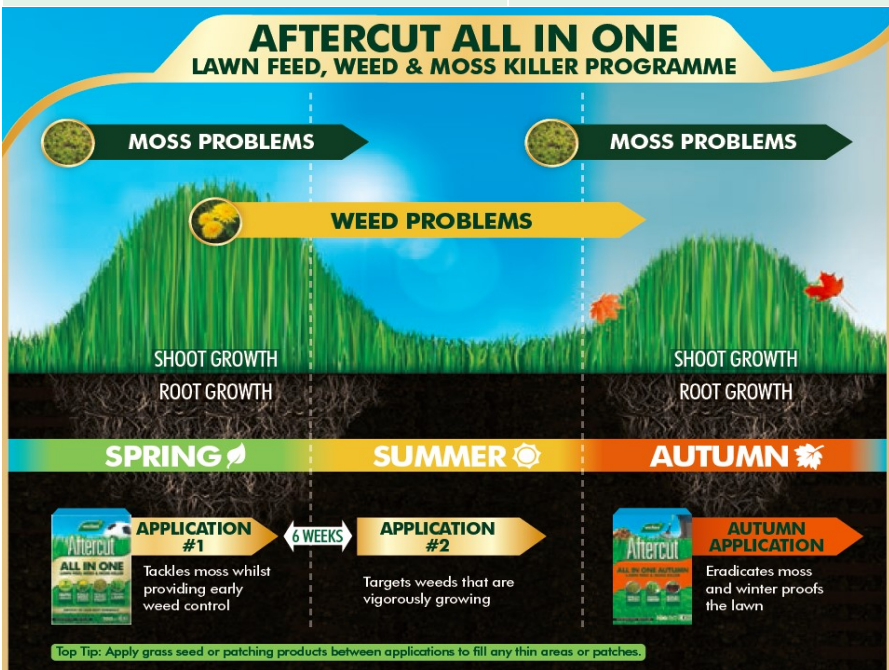
Technical Advice +44 (0)1480 443789 © Westland Horticulture Ltd, Alconbury Hill, Huntingdon, Cambridgeshire PE28 4HY, United Kingdom

Use plant protection products safely. Always read the label and product information before use



NUTRIENT CONTENT

Nutrient	Nutrient Content (% w/w)
Nitrogen (N) Total	10.0%
Phosphorus Pentoxide (P ₂ O ₅)	2.0% (0.9% P)
Phosphorus Pentoxide (P ₂ O ₅) Soluble in water	1.9% (0.8% P)
Potassium Oxide (K ₂ O) Soluble in Water	2.0% (1.7% K)



WEEDS CONTROLLED BY AFTERCUT



Dandelion



White Clover



Daisy



Buttercup

PLUS: Ribwort Plantain, Selfheal, Mouse-Ear Chickweed, Lesser Trefoil, Greater Plantain, Thyme Leaved Speedwell, Creeping Cinquefoil & Birdsfoot Trefoil

CAUTION: AVOID overdosing. AVOID contact with flowers, shrubs, fruit, vegetable plants & hard surfaces. AVOID walking or allowing pets on treated areas until it has rained or product has been watered in and grass is fully dry. DO NOT use first 4 lawn clippings for mulching, until composted for 6 MONTHS. DO NOT re-seed or turf for at least 6 weeks after application. DO NOT apply more than TWICE per season. DO NOT mix or use with other plant protection products.

FREQUENTLY ASKED QUESTIONS

Q. Can my children & pets go into the treated area?

A. Water in the product within 48 hours. Once the lawn has dried, children and pets can use the lawn again. Please note for grazing animals like rabbits, it is best to allow weeds to fully die and remove them before allowing pets back on the lawn.

Q. What causes staining if I spill and wet the product?

A. The stain is from the iron sulphate (moss killer) oxidising and forming rust (iron oxide). It can be removed from most patios with a rust remover containing oxalic acid or citric acid in the form of lemon juice. This should always be tried in a small test area first to make sure there is not any reaction with your particular stone.

For any other questions or advice please contact our Technical Advice line on: **01480 443789** (Mon-Fri 10am-4pm) or email customerservice@westland.com

RISK AND SAFETY INFORMATION

WARNING: Causes serious eye irritation. Toxic to aquatic life with long lasting effects.

If medical advice is needed, have product container or label at hand. Keep out of reach of children.

Wash hands thoroughly after handling. Wear protective gloves/ protective clothing / eye protection/face protection.

IF IN EYES: Rinse cautiously with water for several minutes. Remove contact lenses if present and easy to do. Continue rinsing. If eye irritation persists: Get medical advice/attention. Collect spillage. Dispose of contents/container to a household waste recycling centre as hazardous waste except for empty containers which can be disposed of by recycling. Contact your local council for details. Contains 2,4-D. May produce an allergic reaction. To avoid risks to human health and the environment comply with the instructions for use. Protection during/In use: WASH HANDS & EXPOSED SKIN AFTER USE/HANDLING. If swallowed seek medical advice immediately and show this container or label. Keep off skin and away from eyes. **Environmental protection:** Do not contaminate water with product or its container. Do not empty into drains. **Storage & Disposal:** Store in a cool, dry place. KEEP PRODUCT IN ORIGINAL CONTAINER, tightly closed, in a safe place. KEEP PRODUCT AWAY FROM CHILDREN & PETS. KEEP AWAY FROM FOOD, DRINK & ANIMAL FEEDING STUFFS.



AFTERCUT ALL IN ONE LAWN FEED, WEED AND MOSS KILLER

Technical Advice +44 (0)1480 443789 ©Westland Horticulture Ltd, Alconbury Hill, Huntingdon, Cambridgeshire PE28 4HY, United Kingdom

Use plant protection products safely. Always read the label and product information before use

