

# TECHNICAL FACT SHEET - LAWNS

V3-04/03/2021

## AFTERCUT TRIPLE CARE

### FEEDS GRASS, TOUGH ON WEEDS & MOSS

Our clever formula is specifically formulated to maximise grass nutrition & health. At the same time this will help to overload weeds & moss by creating unfavourable growth conditions.

#### BENEFIT

- 3 Days Rapid Greening
- Moss Prevention
- Impacts Weeds
- Healthier Lawn

#### KEY POINTS

Free of systemic selective herbicides.  
Helps lawns outcompete weeds and moss.  
Feed is optimised for grass nutrition.



#### APPLICATION RATE

METHOD OF APPLICATION	APPLICATION RATE
 Apply by hand or by spreader	35g sq.m

#### NPK VALUE

10-5-5 + 6Fe

#### WHEN TO USE

JAN	FEB	MAR	APR	MAY	JUN	JUL	AUG	SEP	OCT	NOV	DEC
		✓	✓	✓	✓	✓	✓	✓			

#### WHERE TO USE

For use on lawns ONLY



#### INSTRUCTIONS FOR USE

It is advisable to wear gloves when using this product.



**APPLICATION:** Mark out the areas to be treated. Apply evenly at 35g/sq.m over the marked area by hand or wheeled spreader.

#### WHEN USING A WHEELED SPREADER:

Adjust the setting or calibrate to apply 35g/sq.m.

Visit [www.gardenhealth.com](http://www.gardenhealth.com) for spreader setting guidance

**TO FINISH:** Brush off granules immediately from hard surfaces, paving, decking, clothing and footwear to avoid staining/discolouration.

Do not wash as may cause staining.

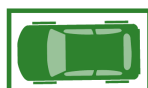


Water the lawn within **48 HOURS** if no rain falls.  
After **3 DAYS** the lawn will become greener and healthier.  
Some temporary blackening may appear on heavy moss infested lawns.

Regular applications will create a thicker, hard-wearing lawn and help suppress weeds and moss.

#### Handy Tip:

1 parking space = 2x5 metres = 10 sq. m



#### AFTERCUT TRIPLE CARE

Technical Advice +44 (0)1480 443789 © Westland Horticulture Ltd, Alconbury Hill, Huntingdon, Cambridgeshire PE28 4HY, United Kingdom

Always read the label and product information before use

For use on established lawns (6+ months old) when grass, moss and weeds are actively growing (Mar-Sept). Wait at least 2-3 weeks for a second application. Afterwards apply every 4-6 weeks. For best results allow lawn to grow 3 days before treatment.

#### BEST CONDITIONS:

Apply when soil is moist and grass is dry. Do not use during drought, freezing, windy conditions or before heavy rain.

#### EXPECTED RESULTS

- The lawn will green up 3 days following application and watering in of the product.
- The existing grass plants will be encouraged to tiller which will thicken up the lawn.
- The thickening up and growth of the grass will help to outcompete both moss and weeds.
- Use in a lawncare programme for the absolute best results (regular applications as per label instructions, scarifying, aeration and overseeding)

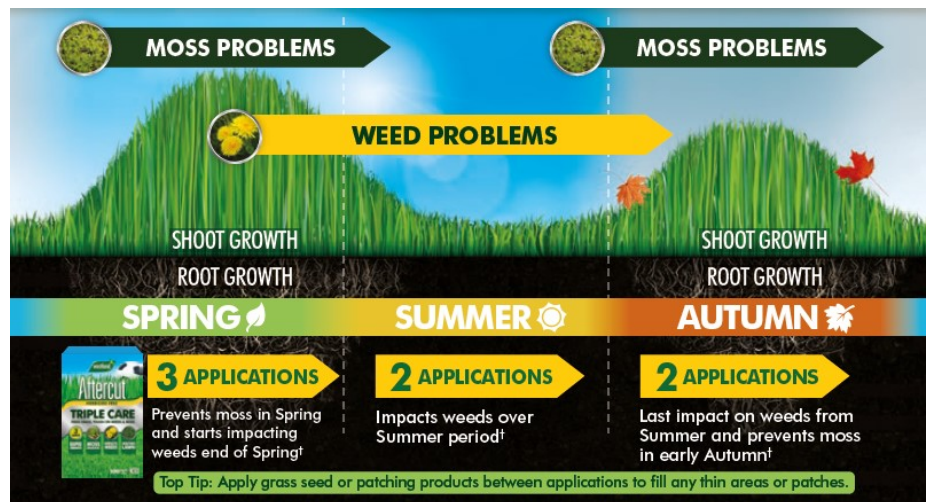
#### GENERAL ADVICE

Water in and allow to dry before walking or allowing pets onto lawn.

**DO NOT OVERDOSE** (max 35g/sq.m) or it can damage your lawn.



## TRIPLE CARE PROGRAMME



## HOW DOES IT WORK?

Our clever formula is specifically formulated to maximise grass nutrition & health. At the same time this will help to overload weeds & moss by creating unfavourable growth conditions.

- Nitrogen and Iron encourage green growth and tillering of grass plants.

- Phosphorus encourages root establishment for improved tolerance to drought tolerance.

- Potassium improves stress resistance and water management.

- Increasing sward density reduces space available for weeds and moss to colonise.

- Increased uptake of water, nutrient and light by the grass weakens the weeds and moss beginning to grow in the lawn.

- Repeated use in a programmed approach will result in a healthy lawn.

## NUTRIENT CONTENT (EC Fertiliser)

Nutrient	Nutrient Content (% w/w)
Nitrogen (N) Total	10%
Phosphorus Pentoxide (P <sub>2</sub> O <sub>5</sub> )	5% (2.19% P)
Phosphorus Pentoxide (P <sub>2</sub> O <sub>5</sub> ) Soluble in water	4.7% (2.05% P)
Potassium Oxide (K <sub>2</sub> O) Soluble in Water	5% (4.15% K)
Total Iron (Fe)	6%



## TREATED LAWN

- Lawns treated with Triple Care will quickly green up from the combination of Nitrogen and Iron.
- Weeds and moss show signs of stress (see image) as the conditions created favour grass growth over weeds and moss.
- With repeated application, the grass will be assisted in thickening and out competing weeds and moss.

## FREQUENTLY ASKED QUESTIONS

**Q. Can my children & pets go into the treated area?**

**A.** Water in the product within 48 hours. Once the lawn has dried, children and pets can use the lawn again.

**Q What is the active ingredient and mode of action for weed control in this product?**

Triple Care does not contain any active ingredients but works by supplying optimised nutrients to the lawn. Triple Care utilises Westland's Dual Action Nutripack Technology to impact weeds in lawns. It does this by;

1. Encouraging healthy grass growth, which reduces the chance of wind-blown seeds finding space to germinate due to thickening of the sward.
2. Overloads existing weeds leaves which limits their potential for growth, as capacity for photosynthesis is reduced.

This results in grass overtaking weeds by outcompeting them for space and resources.

For any other questions or advice please contact our Technical Advice line on: **01480 443789** (Mon-Fri 10am-4pm) or email [customerservice@westland.com](mailto:customerservice@westland.com)

## AFTERCUT TRIPLE CARE

Technical Advice +44 (0)1480 443789 © Westland Horticulture Ltd, Alconbury Hill, Huntingdon, Cambridgeshire PE28 4HY, United Kingdom

Always read the label and product information before use. [www.gardenhealth.com](http://www.gardenhealth.com)

