

# TECHNICAL FACT SHEET - LAWNS

V8-10/02/19

## AFTERCUT LAWN THICKENER

### FEED AND SEED

A mix of lawn feed and grass seed, that greens and thickens the lawn in one easy step.

### BENEFIT



- Green and lush results
- Adds new grass
- Child and pet safe
- Fills in thin areas

### KEY POINTS

- Regular low level feeds are one of the best ways to feed your lawn.
- High quality varieties replace plants lost over time.
- No uncontrolled flush of green growth.
- Organo-mineral fertiliser with lawn seed



### APPLICATION RATE

APPLICATION METHOD	APPLICATION RATE
Apply by hand 	35-50g sq.m
Apply by Spreader 	35-50g sq.m

Estimate the size of your lawn to help avoid over-application. Adjust the spreader setting and calibrate to apply the correct rate. Visit [www.gardenhealth.com](http://www.gardenhealth.com) for spreader setting guidance.

**NPK VALUE: 3-2-3 (+2Fe +2MgO)**

### CONTAINS LAWN SEED:

Hard-wearing	✓
Fast-emerging	✓
Narrow leaved varieties	✓
Thickens up the lawn	✓
Drought resistance	✓
Shade tolerance	✓



Local conditions can effect germination of seed such as extreme heat or lack of watering.

### WHERE TO USE



For use on lawns

For best results apply to the lawn after mowing and remove the clippings for better seed-soil contact.

### EXPECTED RESULTS

After 3 DAYS the lawn will become greener and healthier. Over the following days and weeks, the grass seed will germinate to create a lush, thicker lawn.

### WHEN TO USE

JAN	FEB	MAR	APR	MAY	JUN	JUL	AUG	SEP	OCT	NOV	DEC
✓	✓	✓	✓	✓	✓	✓	✓	✓			

### BEST CONDITIONS:

When grass is actively growing.

Apply when the soil is moist and the grass is dry.

Do not apply when soil is dry, during freezing conditions or when frost is expected.

### INSTRUCTIONS FOR USE

It is good practice to wear gloves when using the product. Estimate the area to be treated to help prevent overdosing.

**BY HAND:** Evenly apply 35-50 grams per square metre over the marked area.

**BY WHEELED SPREADER:** Apply at a rate of 35-50 grams per square metre evenly over the lawn.

**TO FINISH:** Brush off granules immediately from hard surfaces, decking, clothing and footwear to avoid staining/discolouration. Do not wash surfaces clean as may cause staining. Water in thoroughly after application. Keep the lawn well watered for at least 2 WEEKS to help grass seed germination. **Do not exceed application rate—overdosing can cause damage to your lawn.**

### AFTERCUT LAWN THICKENER

Technical Advice +44 (0)1480 443789 ©Westland Horticulture Ltd, Alconbury Hill, Huntingdon, Cambridgeshire PE28 4HY, United Kingdom

Always read the label and product information before use



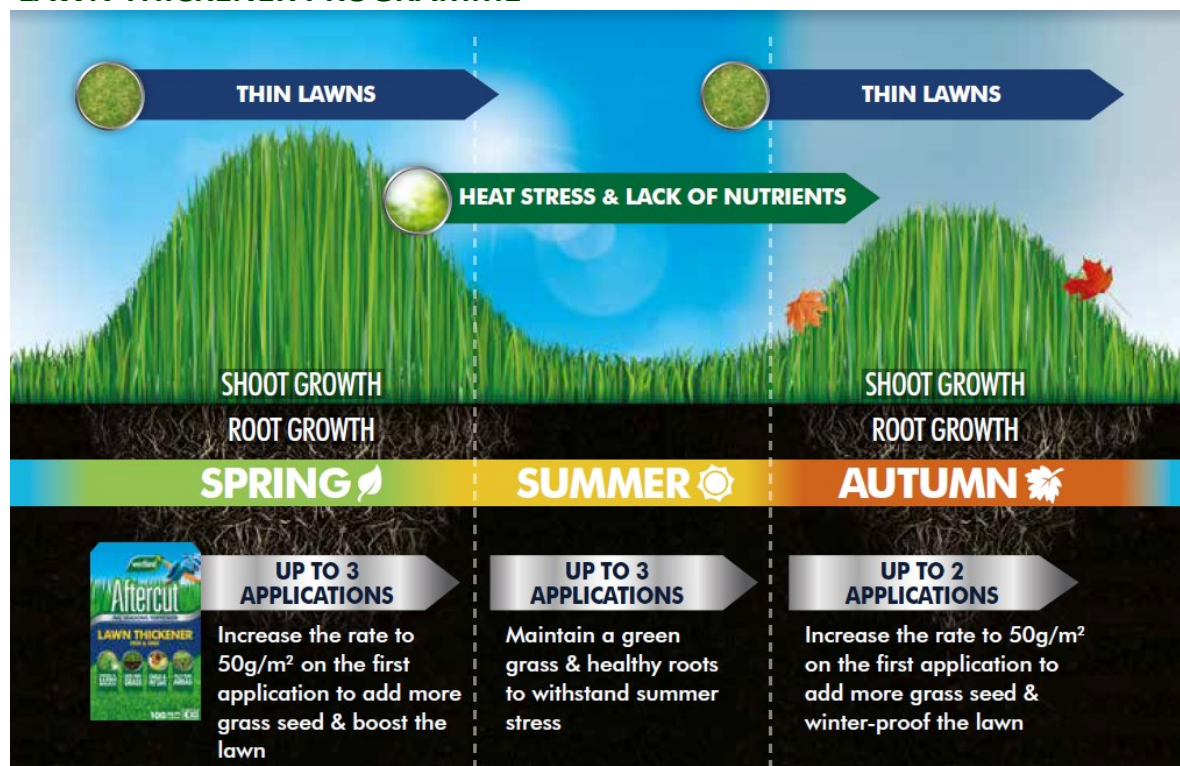
## FERTILISER DECLARATION

Nutrient	Nutrient Content (% w/w)
Nitrogen (N) Total	3.0%
Phosphorus Pentoxide (P <sub>2</sub> O <sub>5</sub> )	2.0% (0.9% P)
Potassium Oxide (K <sub>2</sub> O) Soluble in Water	3.0% (2.5% K)
Total Iron (Fe)	2.0%
Total Magnesium Oxide (MgO)	2.0% (1.2% Mg)

## EXAMPLE OF PRODUCT



## LAWN THICKENER PROGRAMME



## FREQUENTLY ASKED QUESTIONS

**Q. Can my children & pets go into the treated area?**

**A.** Water the product in and allow lawn to dry to prevent the product from being transferred (on paws or shoes) from the lawn to other areas where it may stain.

For any other questions or advice please contact our Technical Advice line on: **01480 443789** (Mon-Fri 10am-4pm) or email [customerservice@westland.com](mailto:customerservice@westland.com)

## RISK AND SAFETY INFORMATION

AVOID walking or allowing pets on treated area until granules have been watered in and the lawn is fully dry.  
Transferring product onto hard surfaces/into the house may cause staining.  
Children and pets need NOT be excluded from treated areas.  
Wash hands and exposed skin after use.  
Store away from children and pets in a dry frost-free place.

CONTENTS MAY SETTLE IN TRANSIT.  
FOR USE ONLY AS A HOME GARDEN LAWN TREATMENT.

Seed mixture for amenity use comprising of 92% fertiliser and 8% grass seed.

### AFTERCUT LAWN THICKENER

Technical Advice +44 (0)1480 443789 ©Westland Horticulture Ltd, Alconbury Hill, Huntingdon, Cambridgeshire PE28 4HY, United Kingdom

Always read the label and product information before use

